

**GLS**  
Graphic Laminating Systems

Neerlandweg 28  
B-2610 Antwerpen

Phone: 0032 3 740 06 20  
Email: [info.gls@vegram.be](mailto:info.gls@vegram.be)  
Web: [www.vegram.be](http://www.vegram.be)  
[www.graphiclaminatingsystems.be](http://www.graphiclaminatingsystems.be)

© FEIZEL Maschinenbau GmbH



**TLM**

**500**

**700**

thermal  
laminating machines.

The 5<sup>th</sup> generation of  
professional lamination.

With the revolutionary  
Tornado technology.

# TLM – the best form to laminate with heat!

**FLEXIBLE**

**FAST**

**POWERFUL**

## The 5<sup>th</sup> TLM – machine – generation for your perfect and first-class print finishing

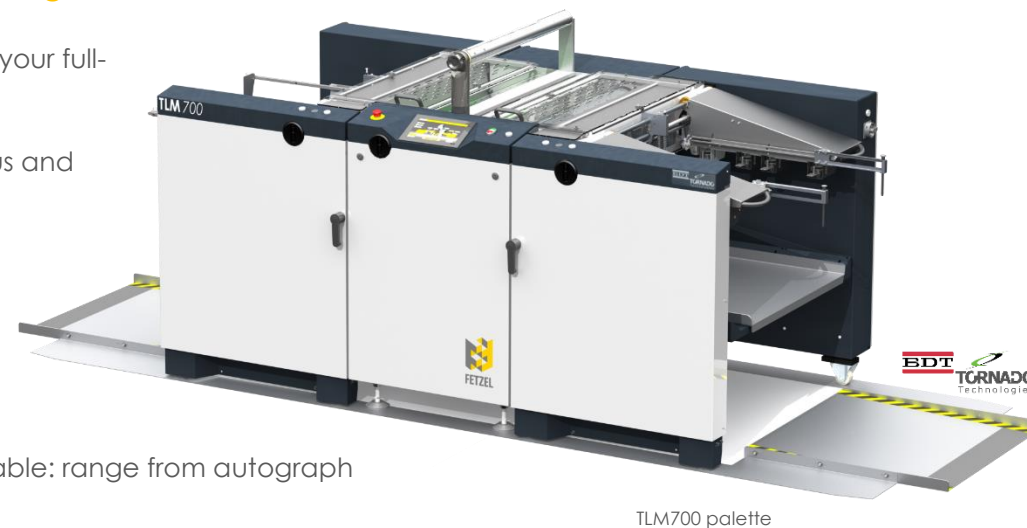
Your customers appreciate your full-service-package?

Your customers are fastidious and require more colour brilliance?

Your customers asking for abrasion resistant, permanent and classy products – in best quality?

Laminate effective and reliable: range from autograph cards to book covers.

**With the new machines TLM500 and TLM700 you are ready for customer orders of every description!**



TLM700 palette

## The TLM is the best form to laminate with heat, because of:

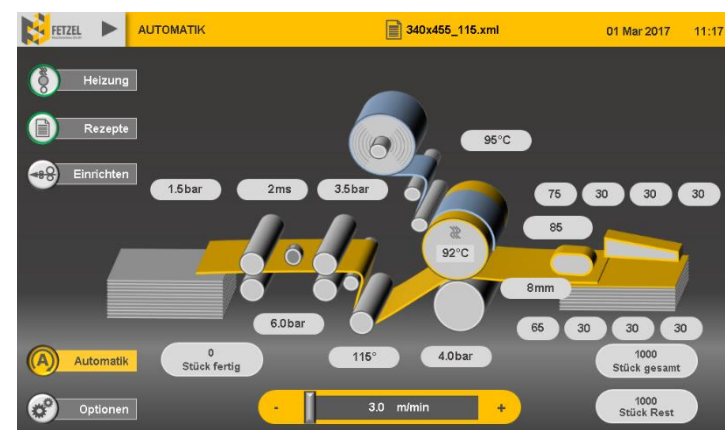
- flexible: available in different variants
- fast: extremely fast changing of the jobs, enabled through the advanced BDI Tornado technologies and an integrated recipe management system of all your papers and films
- powerful: practical, fast and space saving

## Innovative handling with an unique integrated recipe management system

simplifies the job-changing process, through the possibility of managing and saving the following process values:

Information's about the papers and films, nearly all parameters of the feeder adjustments, temperature, laminating pressure, dacurling adjustment, separating system and many more details.

**You select the desired program – the TLM will be ready for your job!**



the TLM family:	TLM 500 basic	TLM 500 pro	TLM 700 palette
sheet size min.	21 x 29cm	21 x 29cm	21 x 29cm
sheet size max.	55 x 76 cm	55 x 76 cm	76 x 106cm
Tornado feeder	•	•	-
Tornado feeder palette	-	-	•
Tornado-modules	5	5	5
Sideblower-modules	6	6	8
feed out table	•	-	-
palette down stacker	-	•	•
height of stack	60 cm	60 cm	60 cm
connection power	6,5 kW	7 kW	9,5 kW
outer dimensions	240 x 132 x 162 cm	260 x 132 x 162 cm	290 x 156 x 162 cm
weight	800kg	1100kg	1400kg



TLM500 basic



TLM500 pro

## Some features

innovative handling with **integrated recipe management system**, unique **recipe management**, automatically adjustment of the feeder parameters, **laminating speed up to 40m/min**, OPP films, for digital and offset-print, electrical decurling, separating system with a hard-wearing diamond-coated wheel, double-sheet detection, **perfect accessibility for setting up and cleaning work** – feeder and stacker **movable on rollers**, temperature up to 130°C, **laminating force up to 30kN**, ready for remote servicing, recipe handling and updates with USB-stick, **lateral**; **adjustment of the palette** (TLM700), **laserlines for alignment of the paper** in the feeder (TLM700), unit for film transfer on request.